



# GMT MONTHLY MEMBERSHIP PROGRESS REPORT

Results as of: 3/31/2026

Multiple District 26

LOCATION: MISSOURI

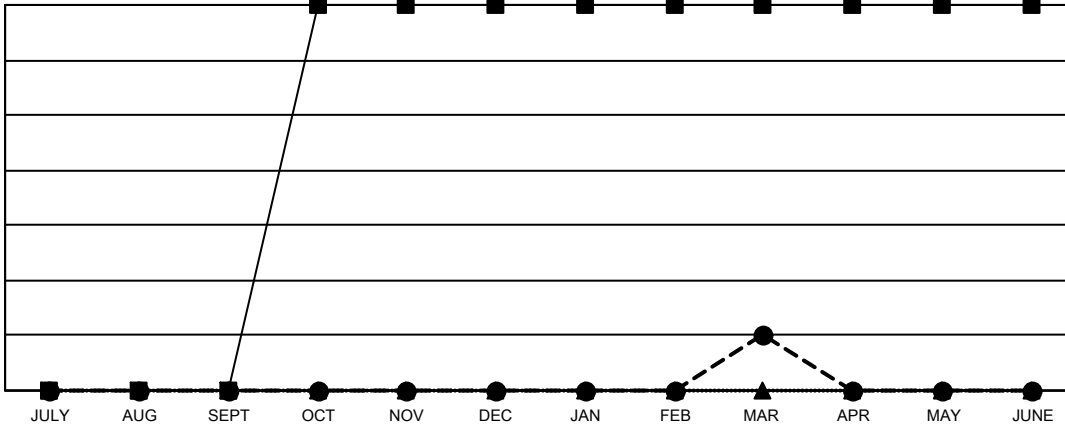
GMT: OPEN

GMT CA 1

Clubs			
RESULTS FOR 2025-2026			
QUARTER	NEW CLUB GOAL	NEW CLUBS	DROPPED CLUBS
JULY/AUG/SEPT	0	0	1
OCT/NOV/DEC	7	0	5
JAN/FEB/MAR	0	1	2
APR/MAY/JUNE	0	0	0

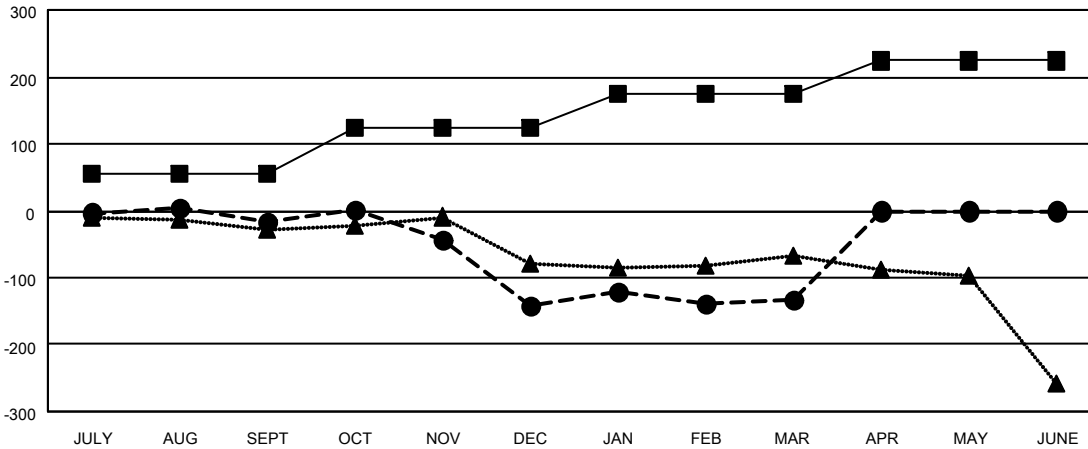
Members			
RESULTS FOR 2025-2026			
QUARTER	MEMBER GROWTH NET GOAL	MEMBER GROWTH ACTUAL	DROPPED MEMBERS ACTUAL (including transfers)
JULY/AUG/SEPT	56	222	162
OCT/NOV/DEC	67	186	292
JAN/FEB/MAR	52	209	177
APR/MAY/JUNE	49	0	0

GOALS AND ACTUAL NEW CLUBS CUMULATIVE



- - CURRENT YEAR GOALS FOR NEW CLUBS
- - CURRENT YEAR ACTUAL NEW CLUBS
- ▲ - LAST YEAR ACTUAL NEW CLUBS

GOALS AND ACTUAL MEMBERS CUMULATIVE



- - MEMBER GROWTH NET GOAL
- - MEMBER GROWTH ACTUAL
- ▲ - LAST YEAR MEMBERSHIP ACTUAL

DROPPED CLUBS: 8	137 CLUBS OF 271 ADDED 1 OR MORE NEW MEMBERS	<b>GENDER DISTRIBUTION</b>
		MALE 4,720 (70.88%)
		FEMALE 1,939 (29.12%)
<b>DROPPED MEMBERS</b>	<a href="#">CLICK HERE FOR CUMULATIVE MEMBERSHIP DATA</a>	TOTAL FAMILY UNIT MEMBERS 1,177
DECEASED 82		FAMILY MEMBERS PAYING HALF DUES 598
CLUB CANCELLED 46		
OTHER 503		
<b>TOTAL 631</b>		